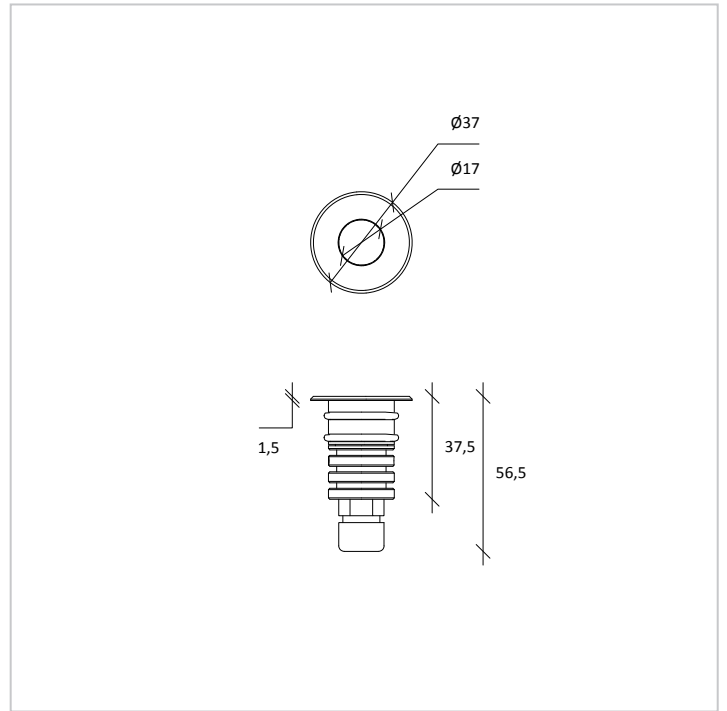


PL 35

ARCHITECTURAL
SPOTLIGHT



PL 35 is a recessed spotlight for outdoor installation, thanks to a wide range of accessories it can be installed in interior and exterior wall, floor and ceiling. It can therefore be installed underwater for swimming pools and fountains.

CE CLIII IP 68

PRODUCT DESCRIPTION

Dissipation body: made of machined and anodized aluminium.

Front ring: made of machined aluminium (stainless steel on request), a wide range of finishing are available.

Front closure: made of serigraphed (for a low glaring impact) tempered glass.

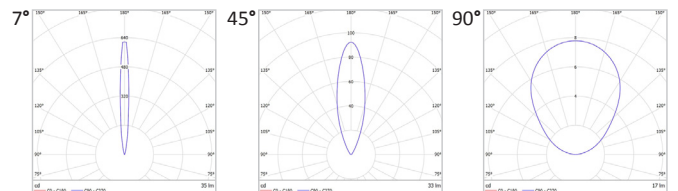
Seals: made in silicone anti-age.

Screws: made of stainless steel AISI 304

Wiring: standard equipment H05RN-F bipolar cable 2X0,75mm²; 4x0,35mm² for RGB version. PG7 plastic cable gland (stainless steel on request), power supply to be inside the recessed housing.

Dimming options: Standard Switch ON/OFF, dimmable 1-10 and dimmable DALI.

PHOTOMETRY



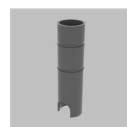
TECHNICAL DATA

Colour temperature	2700 K - 3000 K - 4000 K - 5000 K - RGB
Luminous flux	50 lm *
Power supply	1 W
Luminous efficacy	~ 50 lm/W *
Colour index	85 CRI *
Optics	7° - 45° - 90°
Driving current	350 mA
Input	220 - 240 V 50-60 Hz

* Values are referred to 2700K

ACCESSORIES

Recessed Housing: made of extruded and machined aluminium.



Tassoni & Pesenti

Head Office
address - Via Montegrappa, 32, 20080 Albairate (MI) Italy
web site - www.tplight.it
mail - info@tplight.it
tel/fax - +39.02.97162704

Registered Office
address - Viale E. Forlanini, 23, 20134 Milano (MI) Italy
C.F. & P.I. 07703840962
N° REA 1976624

TASSONI
&
PESENTI