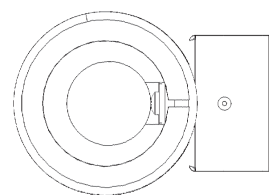
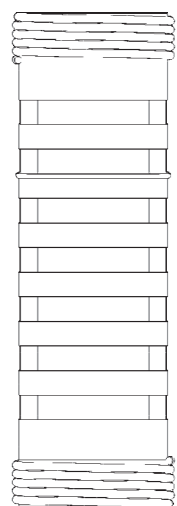
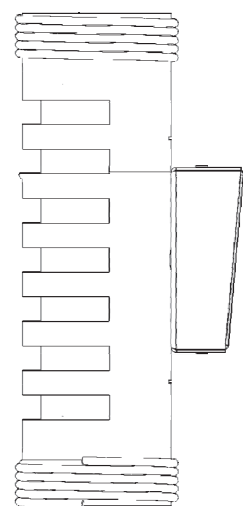
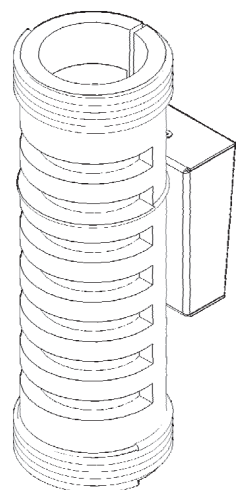
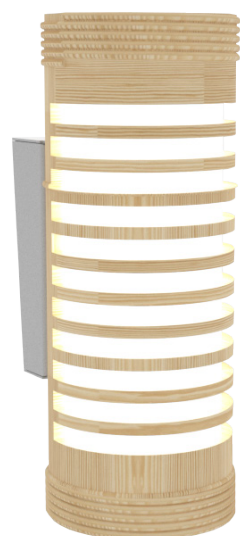
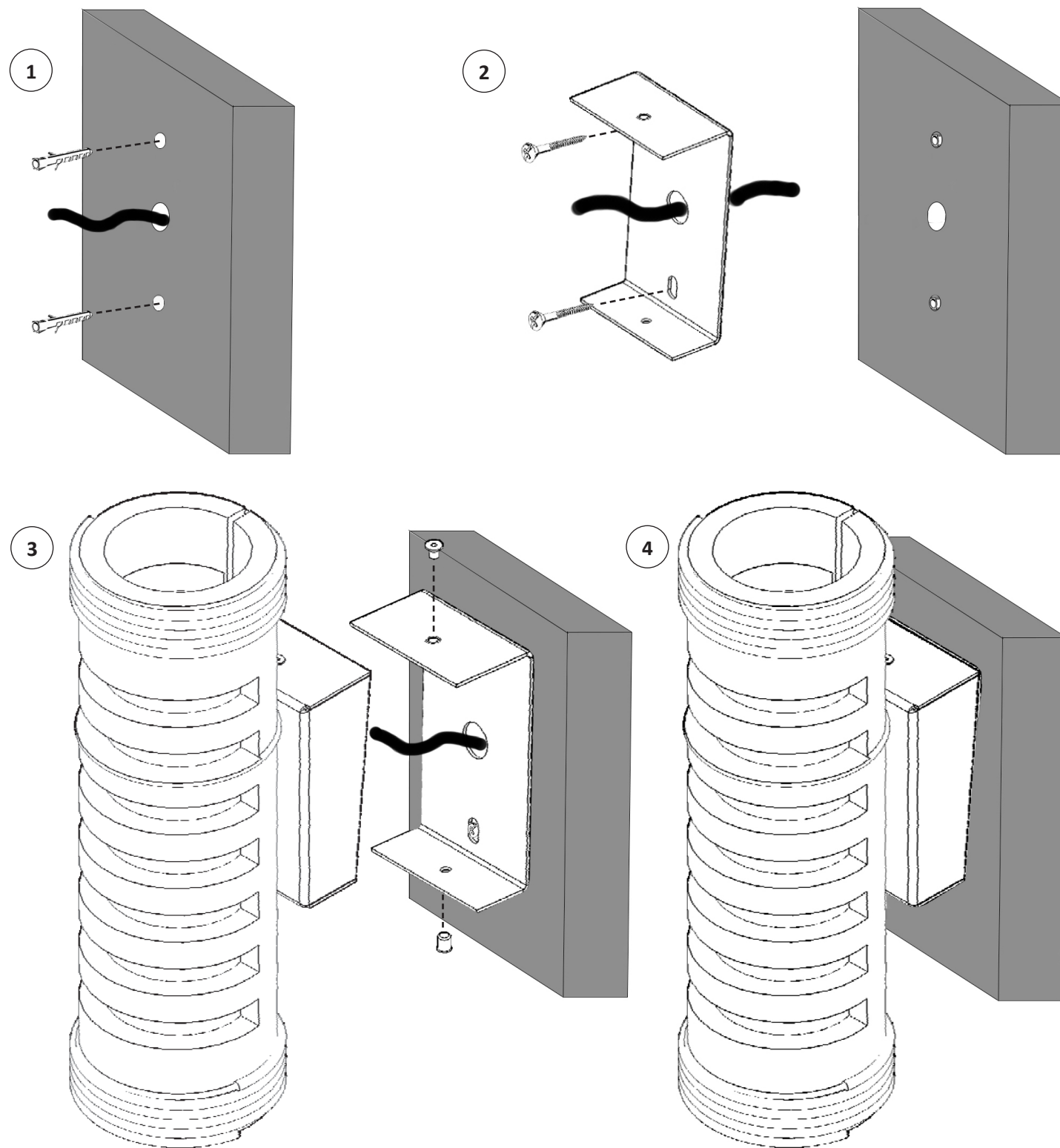


**MOUNTING INSTRUCTION
JAMAICA TYPE C**



Weight: 4 Kg
 Power supply: 350 mA
 Input: 220/240 V
 Output: 24 V
 Power consumption: 6 W
 Color temperature: 2700K



N.B. Before working on the fixture, ensure that the main switch is disengaged.

Proceed as follows to wire and assemble the luminaire:

- 1 - Make holes in the wall and insert the plugs;
- 2 - Fix the plate to the wall by inserting screw;
- 3 - Pass the wiring cable through the hole;
- 4 - Fix the luminaire to the plate;